

# Part 1 Crimes

2008	Jan.	Feb.	Mar.	Apr.	May	June	July	Aug.	Sep.	Oct.	Nov.	Dec.	2008 YTD Totals	2008 Monthly Average YTD	2007 Monthly Average	2007 Totals	Current Month CHANGE from 2007 Average	Percentage change current month vs 2007 monthly average
Homicide	0	0	0	0	1	0	0	0	0	0	0	0	1	0.08	0.08	1	Down	-100%
Rape	2	2	3	4	1	0	2	0	3	2	0	0	19	1.58	1.42	17	Down	-100%
Robbery	10	7	9	12	8	6	13	11	15	7	10	13	121	10.08	9.92	119	Up	31%
Agg. Assault	9	7	16	13	14	9	16	8	10	7	12	5	126	10.50	13.83	166	Down	-64%
<b>Crimes Against Persons Totals</b>	<b>21</b>	<b>16</b>	<b>28</b>	<b>29</b>	<b>24</b>	<b>15</b>	<b>31</b>	<b>19</b>	<b>28</b>	<b>16</b>	<b>22</b>	<b>18</b>	<b>267</b>	<b>22.25</b>	<b>25.25</b>	<b>303</b>	<b>Down</b>	<b>-29%</b>
Burglary	31	42	47	45	38	53	49	60	59	44	64	62	594	49.50	56.92	683	Up	9%
<i>Residential</i>	14	15	17	19	23	27	12	36	34	29	31	24	281	23.42	23.00	276	Up	4%
<i>Commercial</i>	17	27	30	26	15	26	37	24	25	15	33	32	307	25.58	33.92	407	Down	-6%
Theft	177	147	198	160	160	158	157	168	196	171	158	176	2026	168.83	144.33	1732	Up	22%
<i>Theft from Vehicles</i>	71	64	94	67	65	64	64	80	97	69	83	91	909	75.75	57.17	686	Up	59%
<i>Shoplifting</i>	45	34	45	29	42	29	34	34	42	34	30	31	429	35.75	33.92	407	Down	-9%
Auto Theft	37	34	37	32	40	40	28	21	38	24	21	25	377	31.42	30.83	370	Down	-19%
Arson	0	0	1	1	1	0	1	1	2	2	1	0	10	0.83	2.08	25	Down	-100%
<b>Crimes Against Property Totals</b>	<b>245</b>	<b>223</b>	<b>283</b>	<b>238</b>	<b>239</b>	<b>251</b>	<b>235</b>	<b>250</b>	<b>295</b>	<b>241</b>	<b>244</b>	<b>263</b>	<b>3007</b>	<b>250.58</b>	<b>234.17</b>	<b>2810</b>	<b>Up</b>	<b>12%</b>
<b>2008 Totals</b>	<b>266</b>	<b>239</b>	<b>311</b>	<b>267</b>	<b>263</b>	<b>266</b>	<b>266</b>	<b>269</b>	<b>323</b>	<b>257</b>	<b>266</b>	<b>281</b>	<b>3274</b>	<b>272.83</b>			<b>Up</b>	<b>5%</b>
<b>2007 Totals</b>	<b>261</b>	<b>244</b>	<b>267</b>	<b>259</b>	<b>310</b>	<b>249</b>	<b>285</b>	<b>228</b>	<b>239</b>	<b>244</b>	<b>259</b>	<b>271</b>			<b>259.42</b>	<b>3116</b>		
<b>07-08 # Change</b>	<b>5</b>	<b>-5</b>	<b>44</b>	<b>8</b>	<b>-47</b>	<b>17</b>	<b>-19</b>	<b>41</b>	<b>84</b>	<b>13</b>	<b>7</b>	<b>10</b>						
<b>07-08 % Change</b>	<b>2%</b>	<b>-2%</b>	<b>16%</b>	<b>3%</b>	<b>-15%</b>	<b>7%</b>	<b>-7%</b>	<b>18%</b>	<b>35%</b>	<b>5%</b>	<b>3%</b>	<b>4%</b>						

**2008 Year-to-Date**

**Total Part 1 Crime YTD**

**Percentage Change 5%**

Crime Index Total Part 1 Crimes = 42.1

Crime Index for Persons Crimes = 4.1

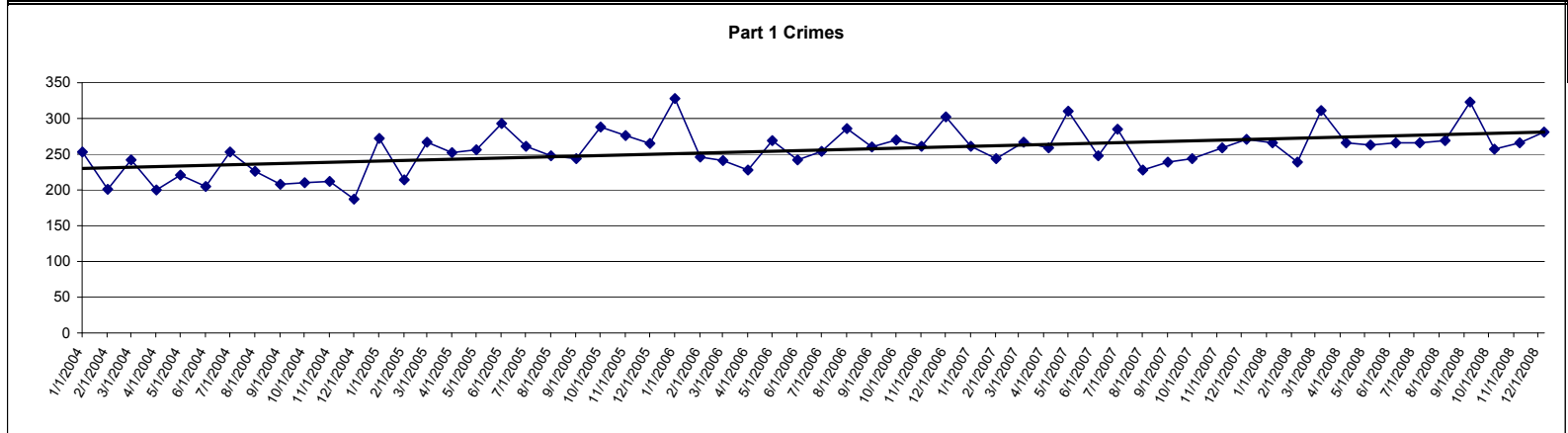
Crime Index for Property Crimes = 38.0

**per 1,000 population**

Crime Index Numbers reflect end of 2007

**"Donut Hole" Crime Statistics**

	Current	Year to Date
Persons	2	18
Property	25	288
Total	27	306



Community Analysis & Technology  
Data and maps are provided without warranty.