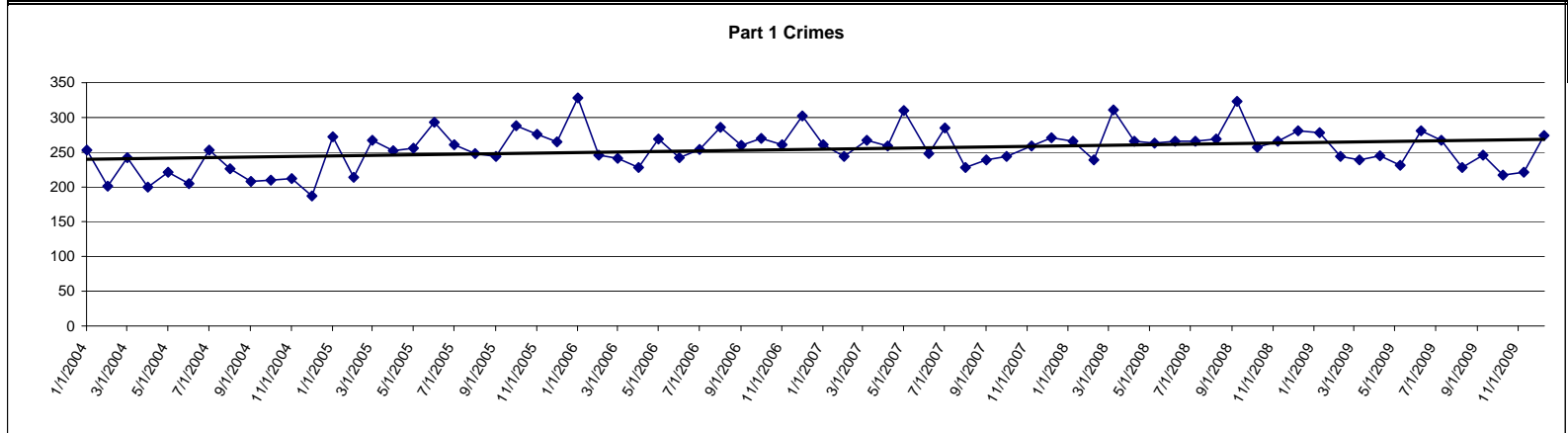


# Part 1 Crimes

2009	Jan.	Feb.	Mar.	Apr.	May	June	July	Aug.	Sep.	Oct.	Nov.	Dec.	2009 YTD Totals	2009 Monthly Average YTD	2008 Monthly Average	2008 Totals	Current Month CHANGE from 2008 Average	Percentage change current month vs 2008 monthly average
Homicide	0	0	1	0	0	1	0	0	0	0	0	0	2	0.17	0.08	1	Down	-100%
Rape	2	0	0	0	1	4	1	2	0	2	0	1	13	1.08	1.58	19	Down	-37%
Robbery	10	7	5	8	8	15	10	5	8	6	16	10	108	9.00	10.08	121	Down	-1%
Agg. Assault	14	9	11	9	8	11	7	9	15	7	8	14	122	10.17	10.50	126	Up	33%
Crimes Against Persons Totals	26	16	17	17	17	31	18	16	23	15	24	25	245	20.42	22.25	267	Up	12%
Burglary	82	45	53	42	58	72	71	56	69	52	66	56	722	60.17	49.50	594	Up	13%
Residential	37	19	18	18	27	33	37	27	29	29	36	31	341	28.42	23.42	281	Up	32%
Commercial	45	26	35	24	31	39	34	29	40	23	30	25	381	31.75	25.58	307	Down	-2%
Theft	149	146	142	149	127	148	148	134	132	126	113	161	1675	139.58	168.83	2026	Down	-5%
Theft from Vehicles	76	76	63	54	57	69	71	59	56	51	43	68	743	61.92	75.75	909	Down	-10%
Shoplifting	31	34	46	50	33	32	24	27	27	19	30	42	395	32.92	35.75	429	Up	17%
Auto Theft	22	38	26	37	28	26	27	21	18	23	17	30	313	26.08	31.42	377	Down	-5%
Arson	0	0	2	0	5	3	1	1	4	1	1	2	20	1.67	0.83	10	Up	141%
Crimes Against Property Totals	253	229	223	228	218	249	247	212	223	202	197	249	2730	227.50	250.58	3007	Down	-1%
<b>2009 Totals</b>	<b>279</b>	<b>245</b>	<b>240</b>	<b>245</b>	<b>235</b>	<b>280</b>	<b>265</b>	<b>228</b>	<b>246</b>	<b>217</b>	<b>221</b>	<b>274</b>	<b>2975</b>	<b>247.92</b>			<b>At</b>	
<b>2008 Totals</b>	<b>266</b>	<b>239</b>	<b>311</b>	<b>267</b>	<b>263</b>	<b>266</b>	<b>266</b>	<b>269</b>	<b>323</b>	<b>257</b>	<b>266</b>	<b>281</b>			<b>272.83</b>	<b>3274</b>		
<b>08-09 # Change</b>	<b>13</b>	<b>6</b>	<b>-71</b>	<b>-22</b>	<b>-28</b>	<b>14</b>	<b>-1</b>	<b>-41</b>	<b>-77</b>	<b>-40</b>	<b>-45</b>	<b>-7</b>						
<b>08-09 % Change</b>	<b>5%</b>	<b>3%</b>	<b>-23%</b>	<b>-8%</b>	<b>-11%</b>	<b>5%</b>	<b>0%</b>	<b>-15%</b>	<b>-24%</b>	<b>-16%</b>	<b>-17%</b>	<b>-2%</b>						

2009 Year-to-Date		
<b>Total Part 1 Crime YTD</b>		
<b>Percentage Change -9%</b>		
<b>Persons YTD - Down 8%</b>		
<b>Property YTD - Down 9%</b>		
Crime Index Total Part 1 Crimes = 45.6		
Crime Index for Persons Crimes = 3.7		
Crime Index for Property Crimes = 41.9		
<b>per 1,000 population</b>		
"Donut Hole" Crime Statistics		
	Current	Year to Date
Persons	0	12
Property	29	238
Total	29	250



Community Analysis & Technology  
Data and maps are provided without warranty.