

Part 1 Crimes

2010	Jan.	Feb.	Mar.	Apr.	May	June	July	Aug.	Sep.	Oct.	Nov.	Dec.	2010 YTD Totals	2010 Monthly Average YTD	2009 Monthly Average	2009 Totals	Current Month CHANGE from 2009 Average	Percentage change current month vs 2009 monthly average
Homicide	0	1	0	1	0	0	0	0	0	0	0	0	2	0.17	0.17	2	Down	-100%
Rape	1	2	2	3	2	4	2	2	3	3	0	1	25	2.08	1.08	13	Down	-7%
Robbery	14	9	14	6	13	11	4	6	6	12	5	12	112	9.33	9.00	108	Up	33%
Agg. Assault	16	22	11	4	8	13	9	3	5	9	9	3	112	9.33	10.17	122	Down	-71%
Crimes Against Persons Totals	31	34	27	14	23	28	15	11	14	24	14	16	251	20.92	20.42	245	Down	-22%
Burglary	68	52	52	51	64	56	56	48	44	44	51	61	647	53.92	60.17	722	Up	1%
Residential	44	34	27	32	32	32	28	29	25	19	28	35	365	30.42	28.42	341	Up	23%
Commercial	24	18	25	19	32	24	28	19	19	25	23	26	282	23.50	31.75	381	Down	-18%
Theft	154	152	166	165	166	146	159	147	164	155	134	157	1865	155.42	139.58	1675	Up	12%
Theft from Vehicles	74	77	70	83	77	66	73	66	49	57	62	68	822	68.50	61.92	743	Up	10%
Shoplifting	34	30	34	25	28	26	34	22	28	24	21	24	330	27.50	32.92	395	Down	-27%
Auto Theft	23	12	13	14	24	20	22	17	24	30	31	25	255	21.25	26.08	313	Down	-4%
Arson	2	1	2	1	0	1	3	1	1	1	0	3	16	1.33	1.67	20	Up	80%
Crimes Against Property Totals	247	217	233	231	254	223	240	213	233	230	216	246	2783	231.92	227.50	2730	Up	8%
2010 Totals	278	251	260	245	277	251	255	224	247	254	230	262	3034	252.83				
2009 Totals	279	245	240	245	235	280	265	228	246	217	221	274	2975		247.92	2975	Up	6%
09-10 # Change	-1	6	20	0	42	-29	-10	-4	1	37	9	-12						
09-10 % Change	0%	2%	8%	0%	18%	-10%	-4%	-2%	0%	17%	4%	-4%						

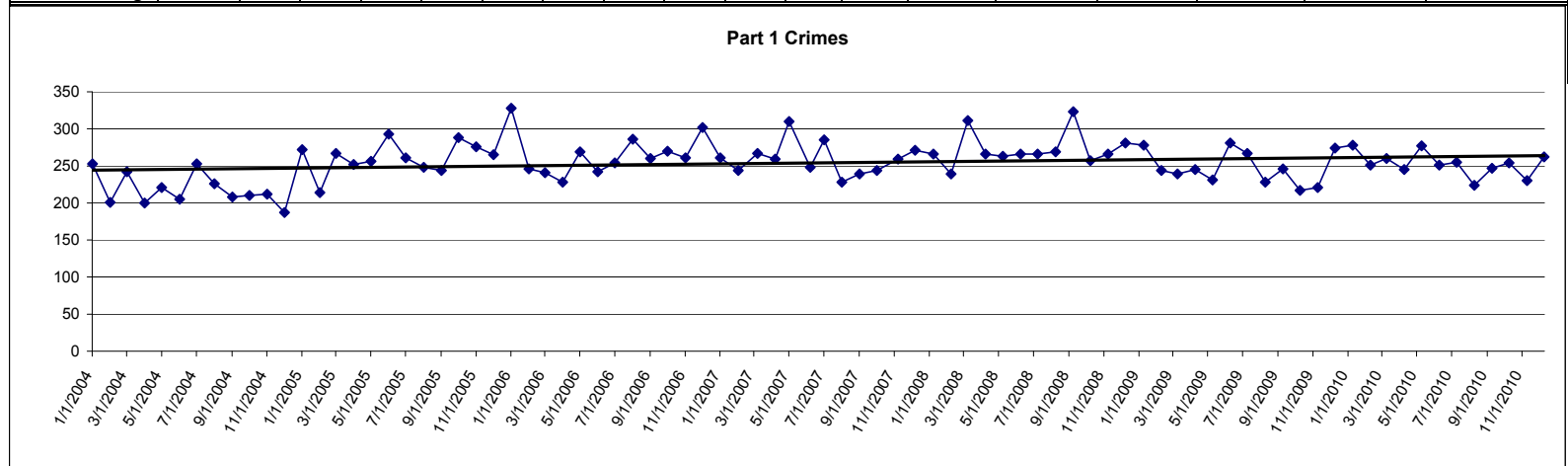
2010 Year-to-Date

Total Part 1 Crime
Percentage Change 6%

Crime Index Total Part 1 Crimes = 42.5
 Crime Index for Persons Crimes = 3.5
 Crime Index for Property Crimes = 39.0

per 1,000 population

Crime Index Numbers reflect end of 2009



Community Analysis & Technology
 Data and maps are provided without warranty.